

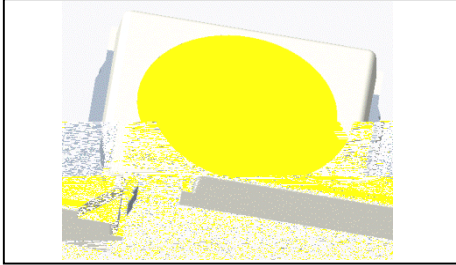
# SPECIFICATION





## 1. Description

### 1.1



2.8mmX3.5mmX0.7mm

LED

2.8mmX3.5mmX0.7mm

### 1.2 Features



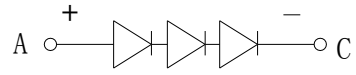
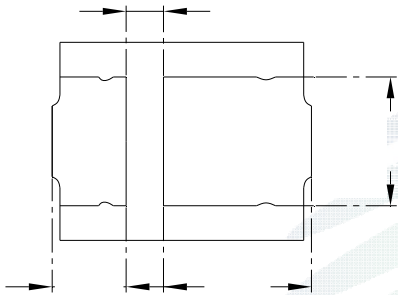
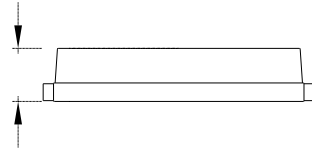
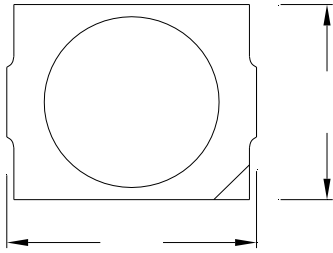
SMT

Level 3

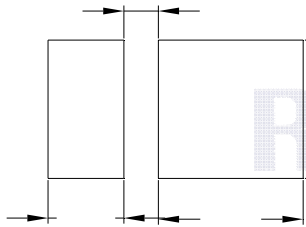
RoHS

### 1.3 Application

### 1.4 Package Dimension



A: anode  
C: cathode



REFOND

1.

2.

±0.05

## 1.5 Product Parameters



0.1ms, 1/10.

±0.1V.

0.005.

ESD2000V

. LED

90% LED

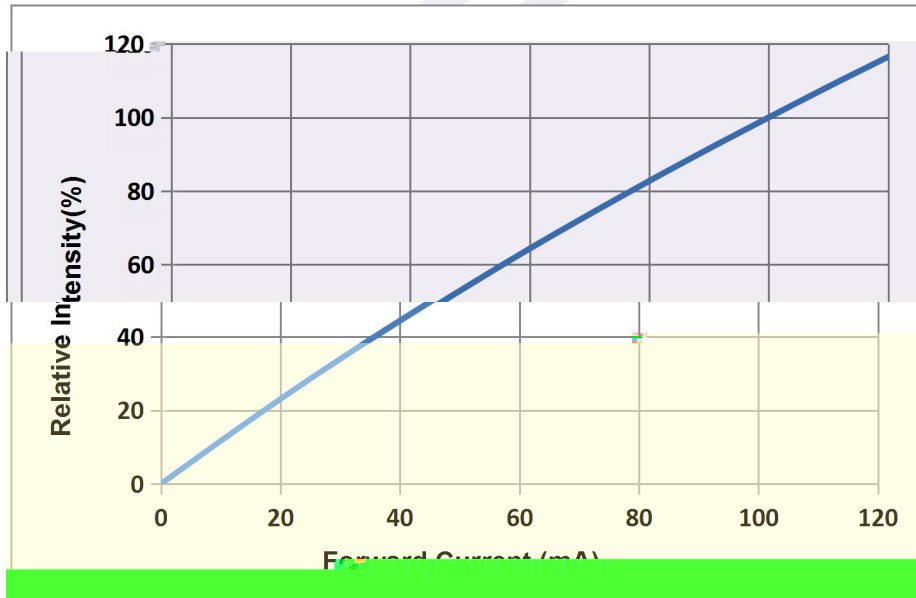
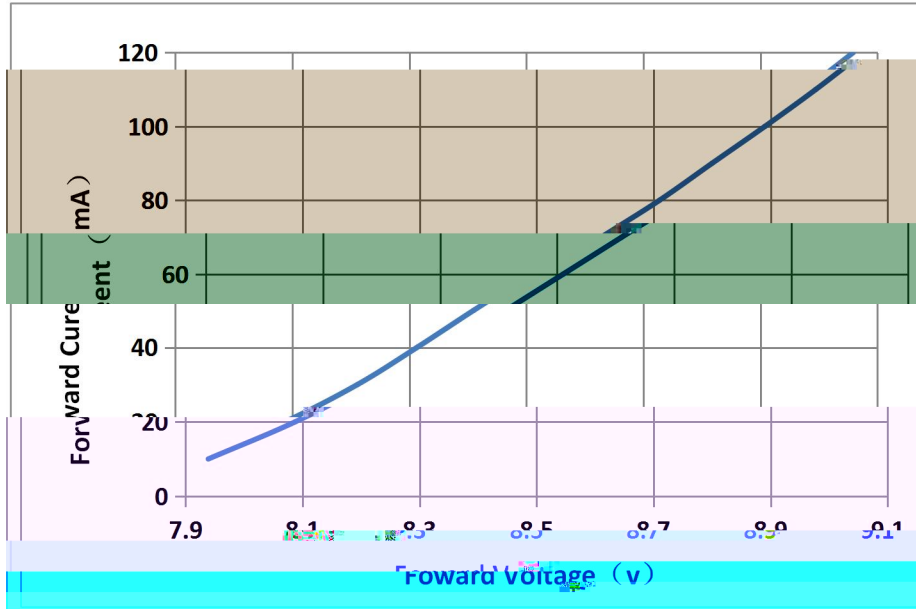
### 1.6 Bin Range Of Forward Voltage and Luminous Flux (IF=100mA)

BIN (IF=100mA)

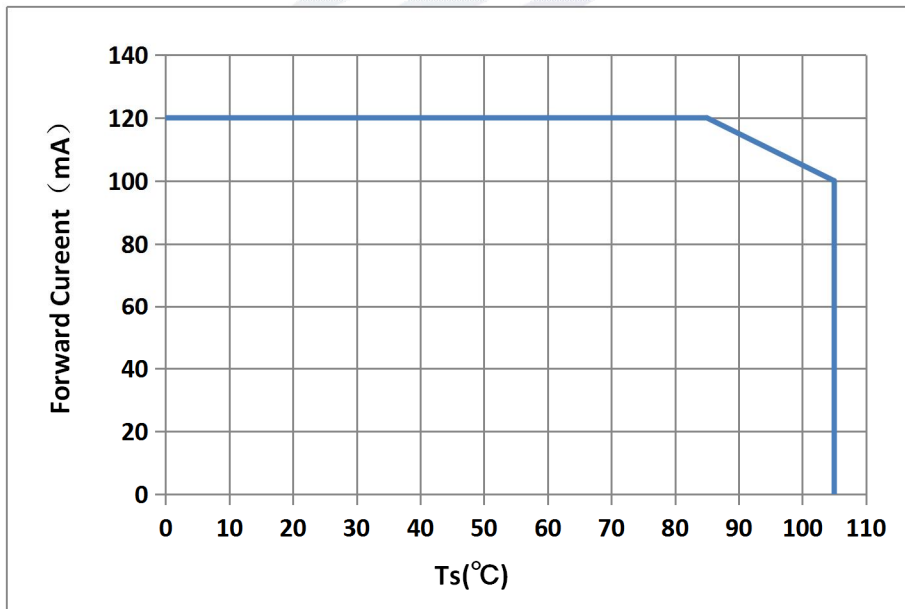
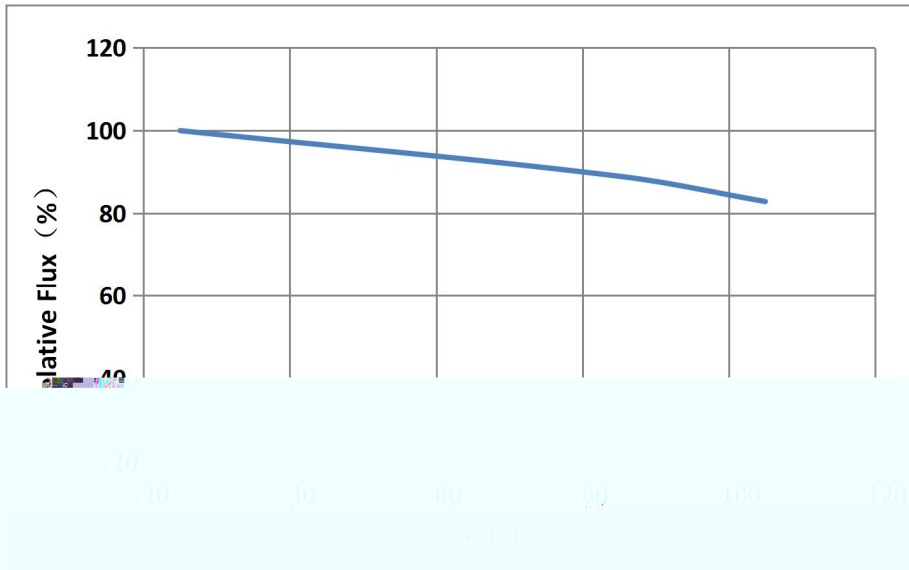
φ			

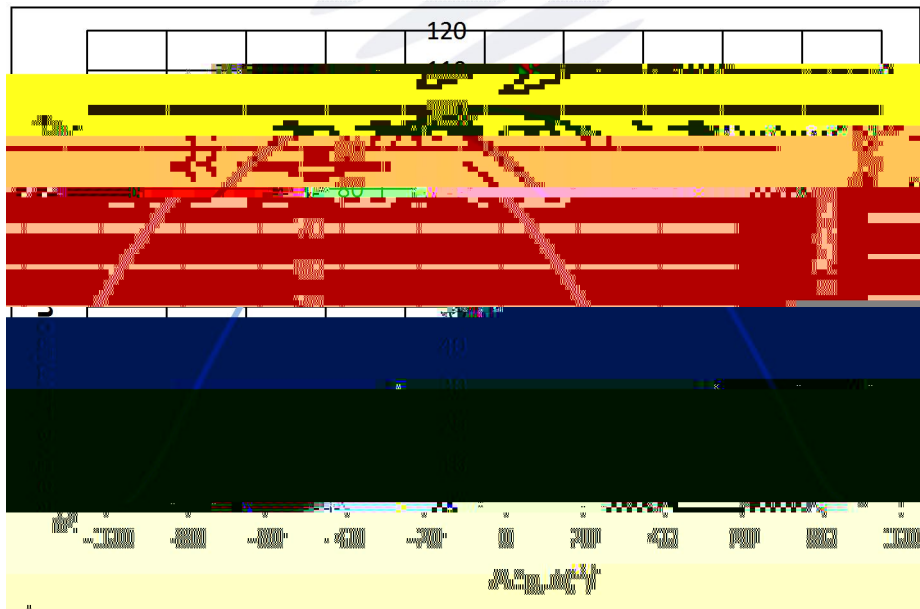
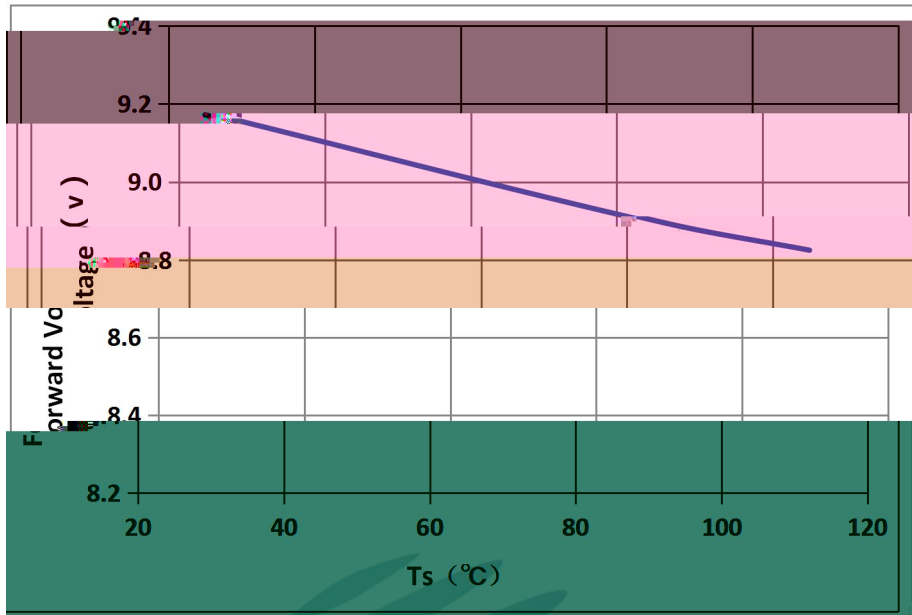


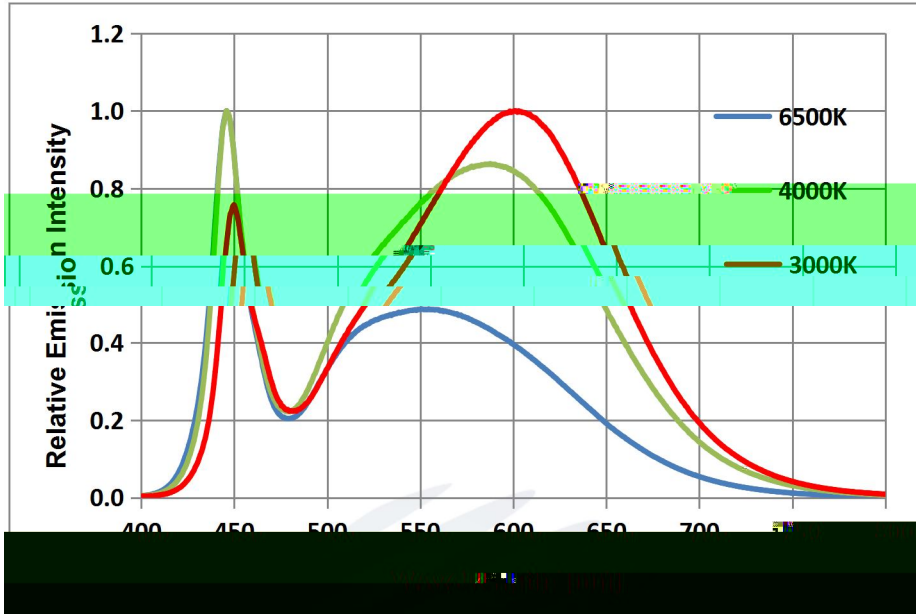
## 1.7 Typical optical characteristics curves











REFOND

## 2. Packaging

### 2.1 Packaging Specification

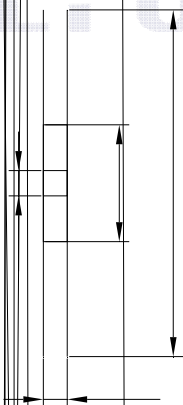
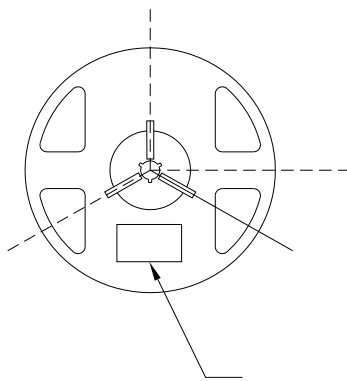
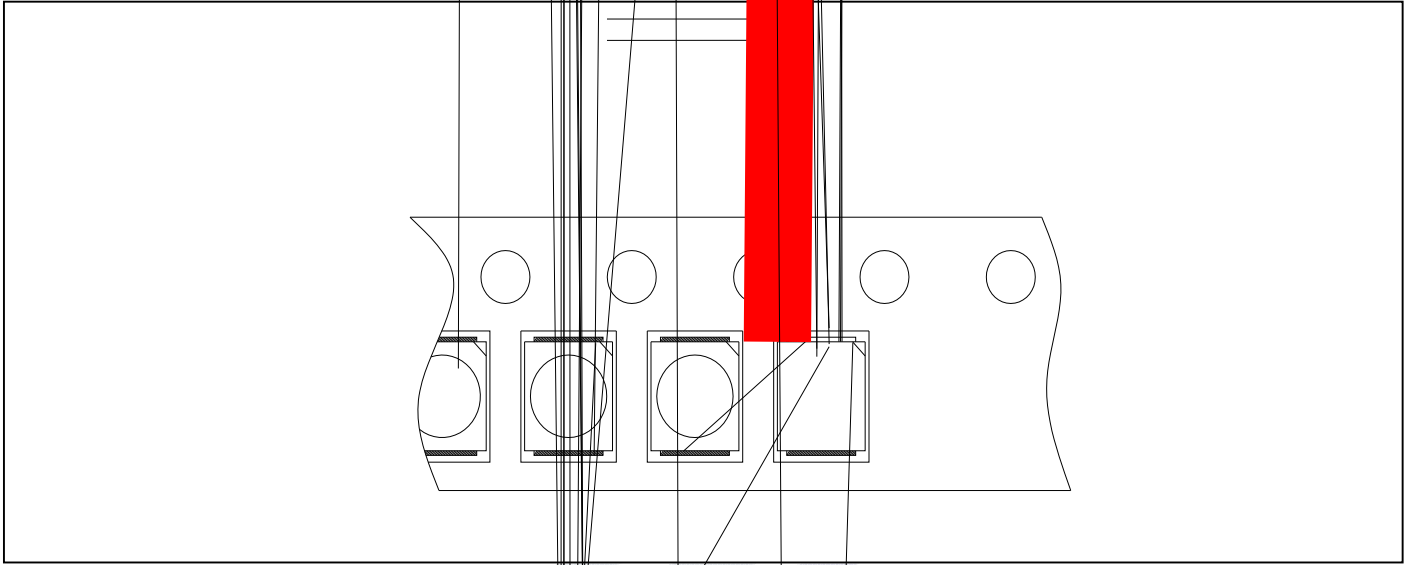
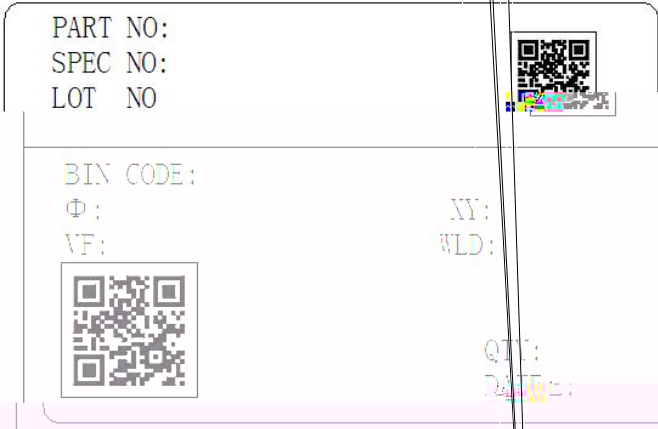


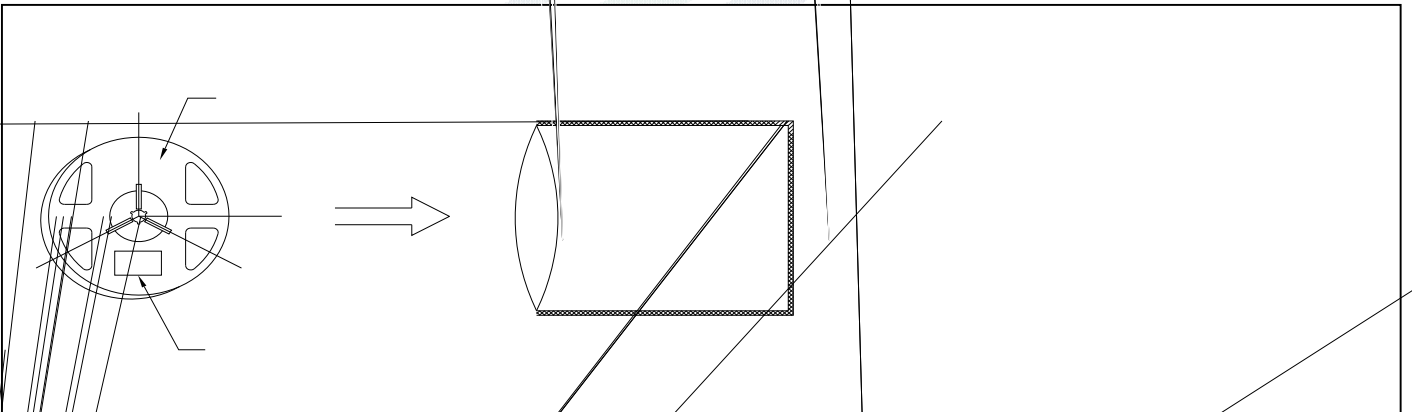
Table 2-1 Title

	±
	±
	±
	±

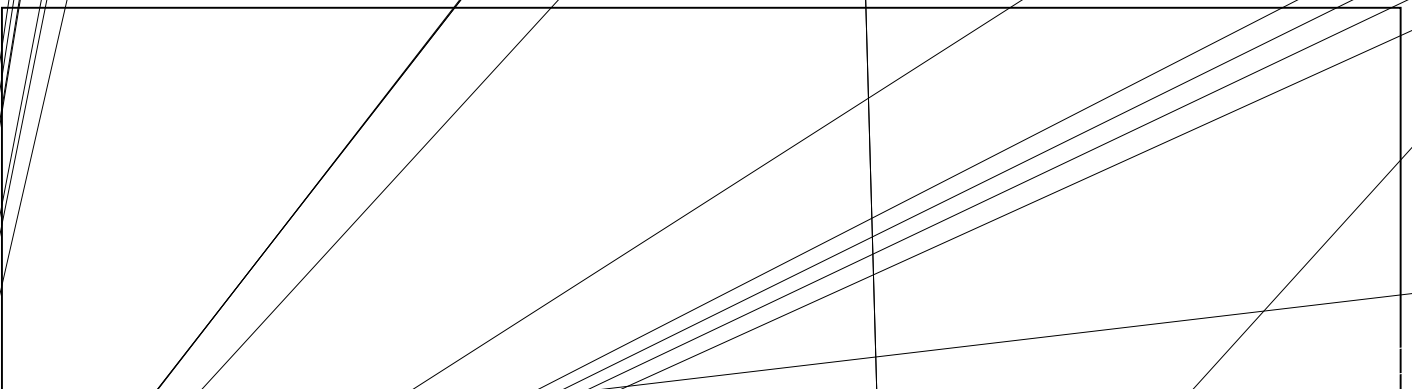
Table 2-2 Title



## 2.2 Moisture Resistant Packing



## 2.3 Cardboard Box



## 2.4 Reliability Test Items And Conditions



## 2.5 Criteria For Judging Damage


REFOND





LED

300 3

LED

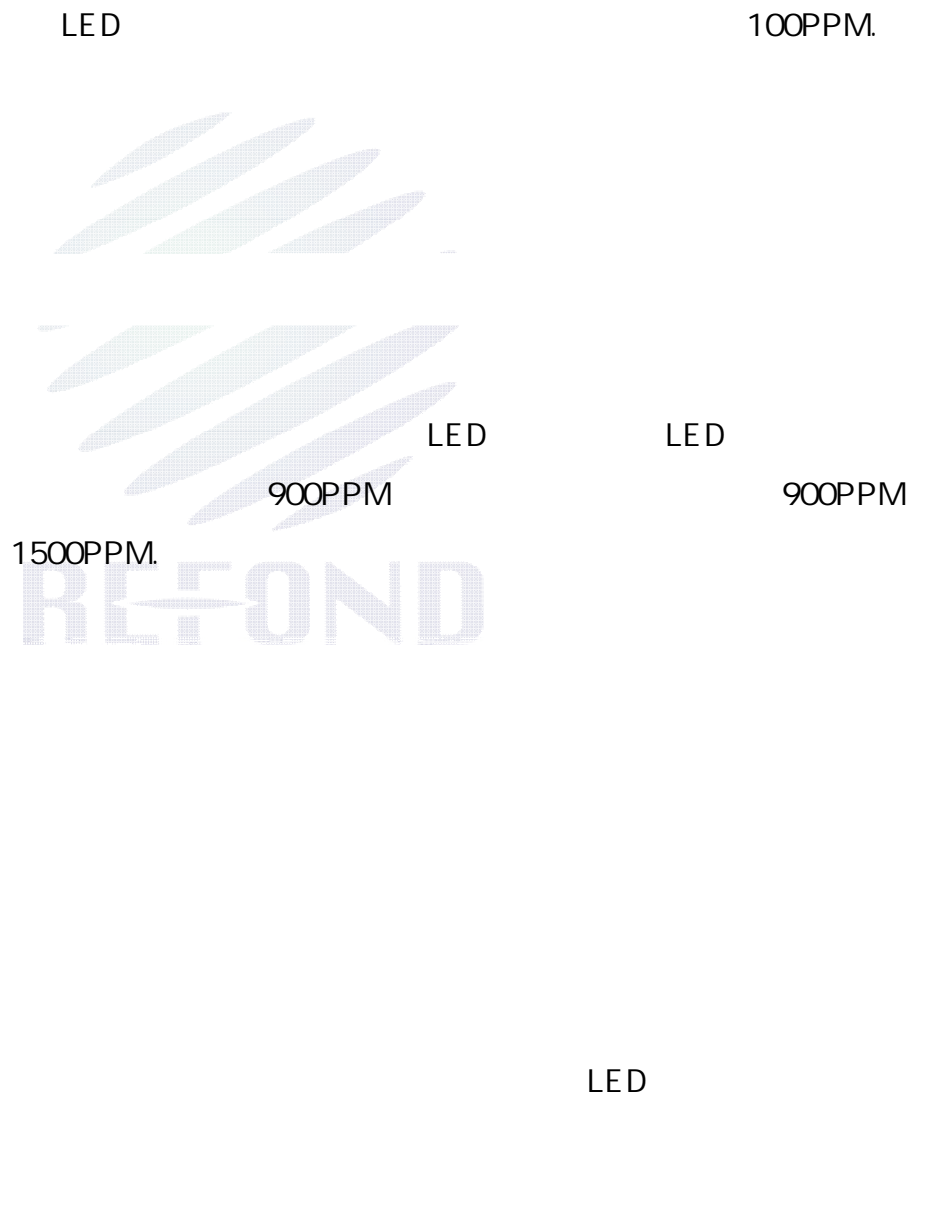


LED

PCB

## 4. Handling Precautions

### 4.1 Handling Precautions





LED


REFOND  
60±5 24

LED



